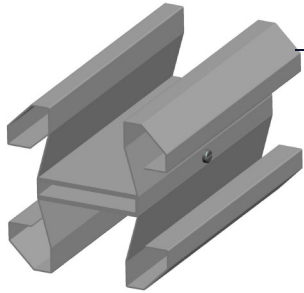


# 6-way Connector

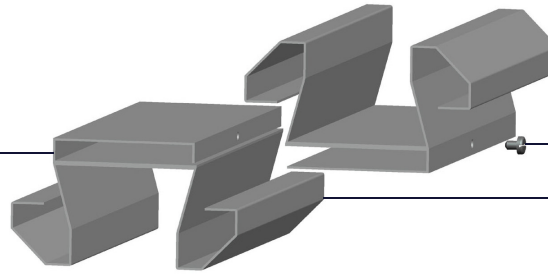
**What:** One component of a system of mass-produced, interchangeable, and reusable house-building parts.

**Purpose:** Used to attach wall, window, and door panels within a home's structural assembly - and enables snap-lock, releasable connections with pressure applied from above, below, right, left, inside, and outside.



6-way Connector - Joined  
Made of two individual extruded shapes, and secured with a set-screw.

6-way Connector - Released  
With set-screw removed, the two parts can slide apart, enabling connected assemblies to be taken apart without damage.



top extrusion

release screw

bottom extrusion

## Detail 1

### Wall Panel to Wall Panel Connection

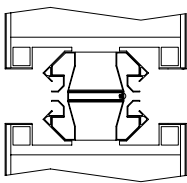
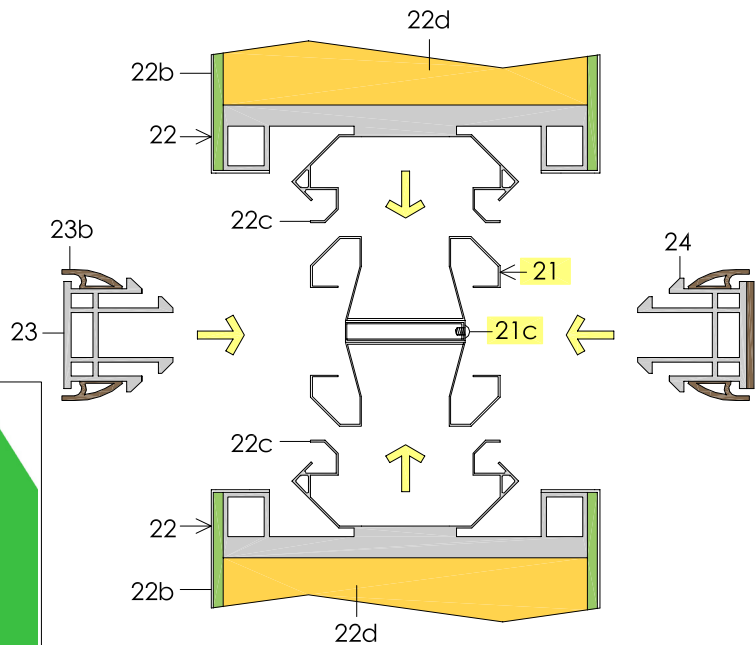
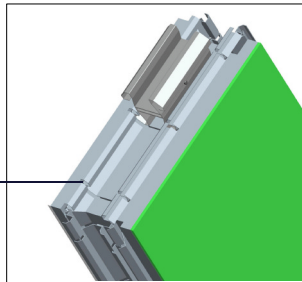
#### Key:

→ Direction of applied pressure to secure components.

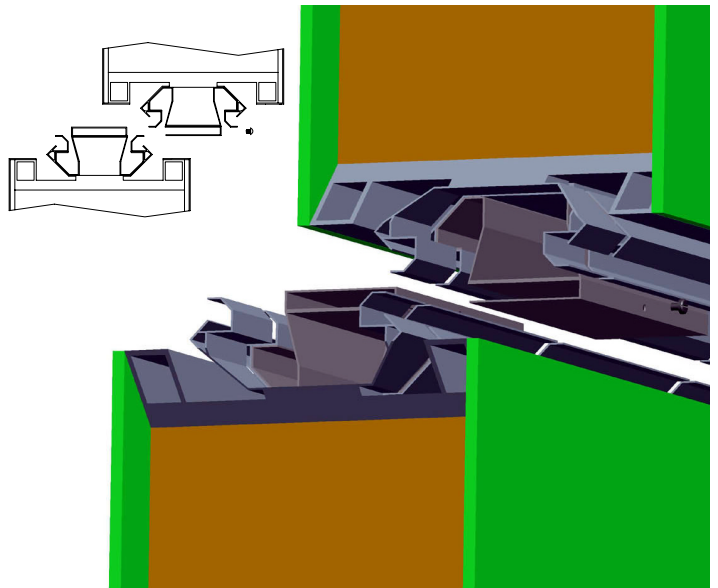
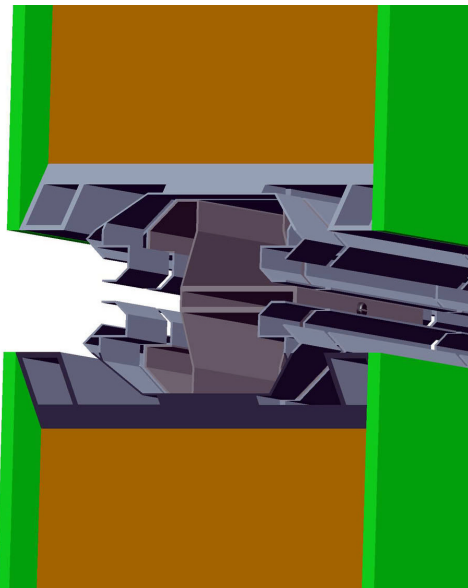
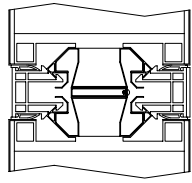
#### Parts:

- 21 6-way Connector
- 21c Connector Set Screw (remove to release assembly)
- 22 Wall Panel
- 22b Panel Skin
- 22c Panel Extrusion
- 22d Panel Insulation
- 23 Exterior Weather Strip
- 23b Compression Seal
- 24 Interior Weather Strip

**Inset 1:**  
Shows typical exterior wall panel with panel extrusion along all four sides. The 6-way connectors clip into these channel-like extrusions.



**Inset 2:**  
Finished connection with weather strips installed.



Detail 1 - Connected

Detail 1 - Released

